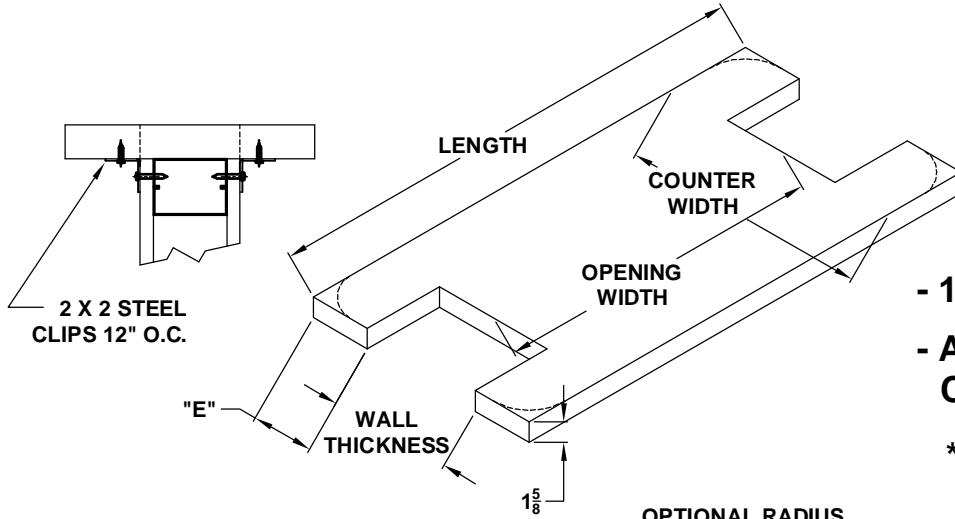
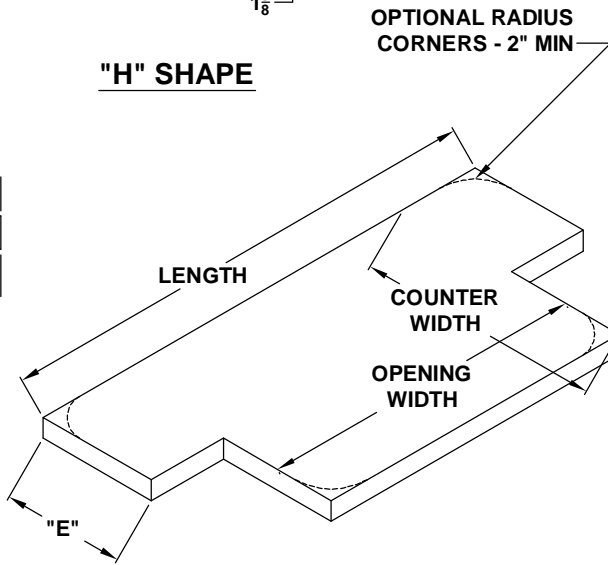
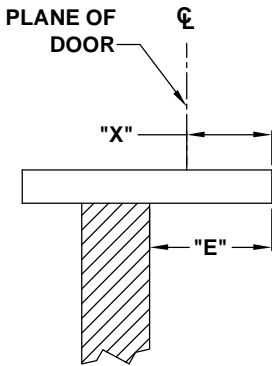


FIRESTOP COUNTERTOP

(PLASTIC LAMINATE OVER FIREPROOF CORE MATERIAL)



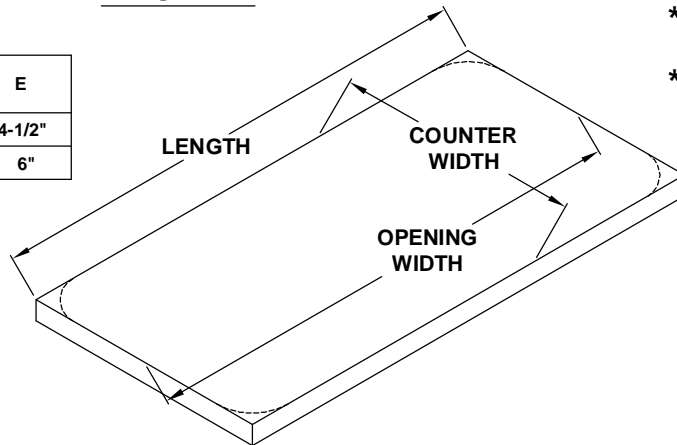
"H" SHAPE



"T" SHAPE

X = MINIMUM EDGE DISTANCE

OPENING WIDTH	X	E
UP TO 8'-0"	3"	4-1/2"
8' TO 12'-0"	4-1/2"	6"



RECTANGULAR SHAPE

(FOR BETWEEN JAMB MOUNTED DOORS ONLY)

- 1-1/2 HR RATED
- APPROVED WALL CONSTRUCTION
 - * GYPSUM BOARD W/16GA METAL STUD (MIN)
 - * STRUCTURAL STEEL
 - * CONCRETE
 - * MASONRY
- SIZE LIMITATIONS
 - * LENGTH - 12 FEET
 - * COUNTER WIDTH - 48"
 - * OVERHANG "E" DIM - 16"
- AVAILABLE PLASTIC LAMINATE BRANDS
 - * FORMICA
 - * WILSONART
 - * NEVAMAR

ENGINEER APPROVAL	DIM TOLERANCE UNLESS SPECIFIED	REPLACES: NONE		 Rolling Doors	TITLE: FIRESTOP COUNTERTOP CUT SHEET	
BY:	FRACTIONS ±1/16	ECN: 0977	REVISION		PG 1 OF 1 PART/DWG. NO: 3023 REV: 0	
DATE:	ANGLES ±1/2°	O.D.D. 10/5/05	DATE: NONE			
	DECIMALS .XX ±.01 .XXX ±.005	BY: RG	BY: NONE			